

# **PIMMS Transfer Study Trip**

## ***School Travel Planning & Safe Routes to Schools***

# LEPT

- Represent London and London boroughs, in Europe on sustainable transport agenda
- Our work:
  - Improved information exchange
  - Increased participation in EU projects
  - Greater involvement in the EU's decision making process

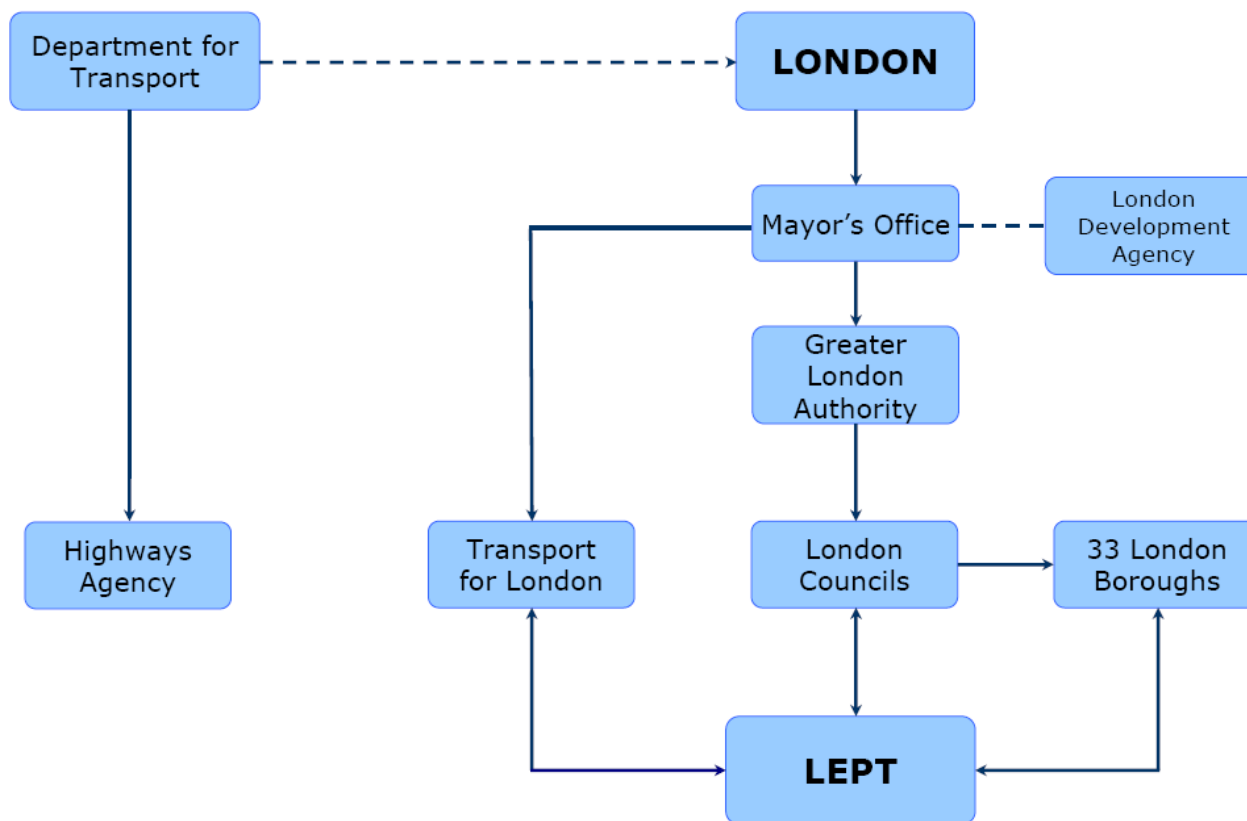
# LEPT – our work

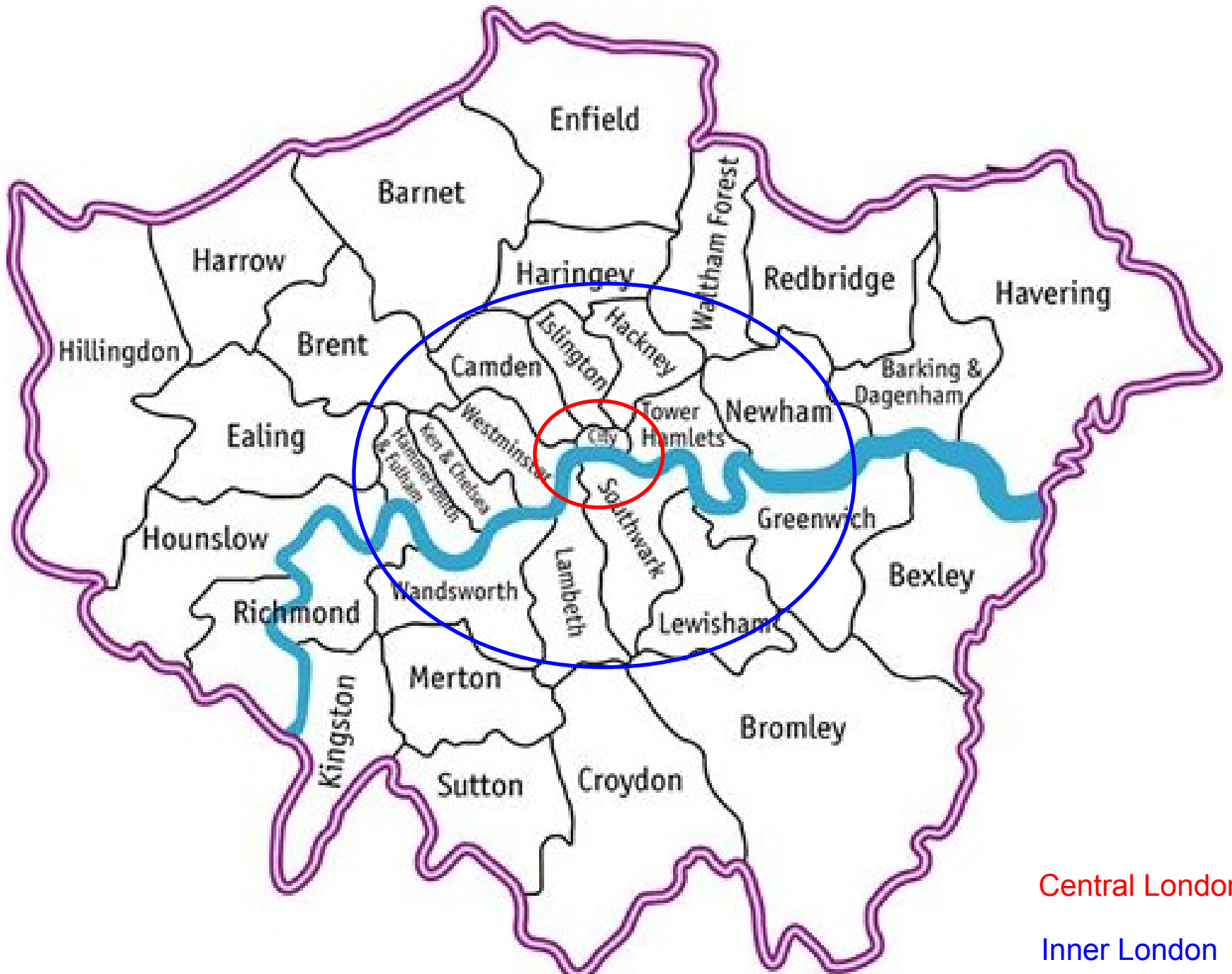


- And....
  - Other EC bids e.g. EVA
  - Supporting boroughs on bids: SMILES, CARMA, SEGMENT
  - Implementation of pilot projects
  - Marketing & promotion of London



# London

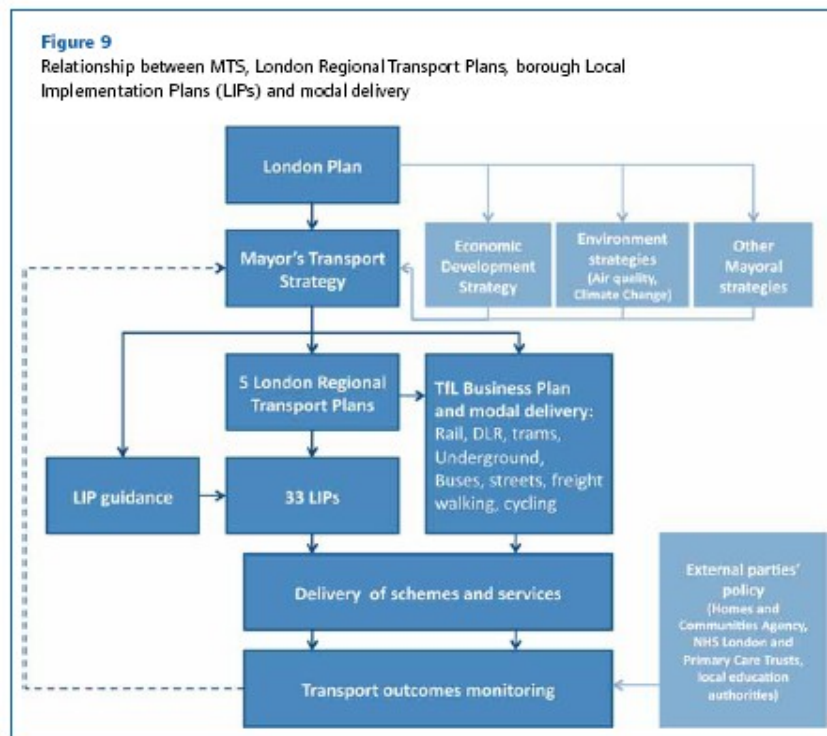




Central London

Inner London

# Mayor's Transport Strategy – *outlining the Mayor's vision for London*



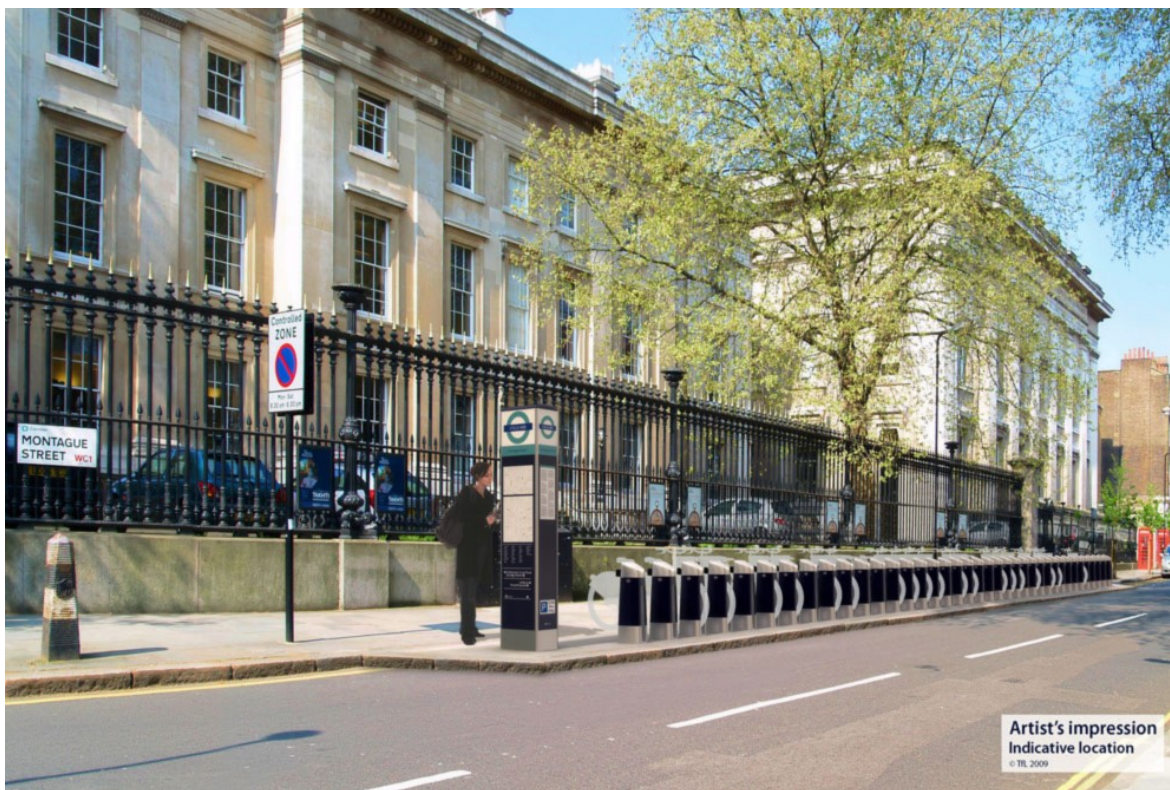
# Mayor's Transport Strategy – *outlining the Mayor's vision for London*

- Economic development & growth
- Quality of life
- Safety & security
- Transport opportunities
- Climate change

# London's Mobility Management Work Areas

1. Workplace Travel Planning
2. School Travel Planning
3. Travel Awareness & Marketing
4. Personalised Travel Planning
5. Integrated Area Programmes
6. Car Clubs & Smarter Driving
7. Tele-working

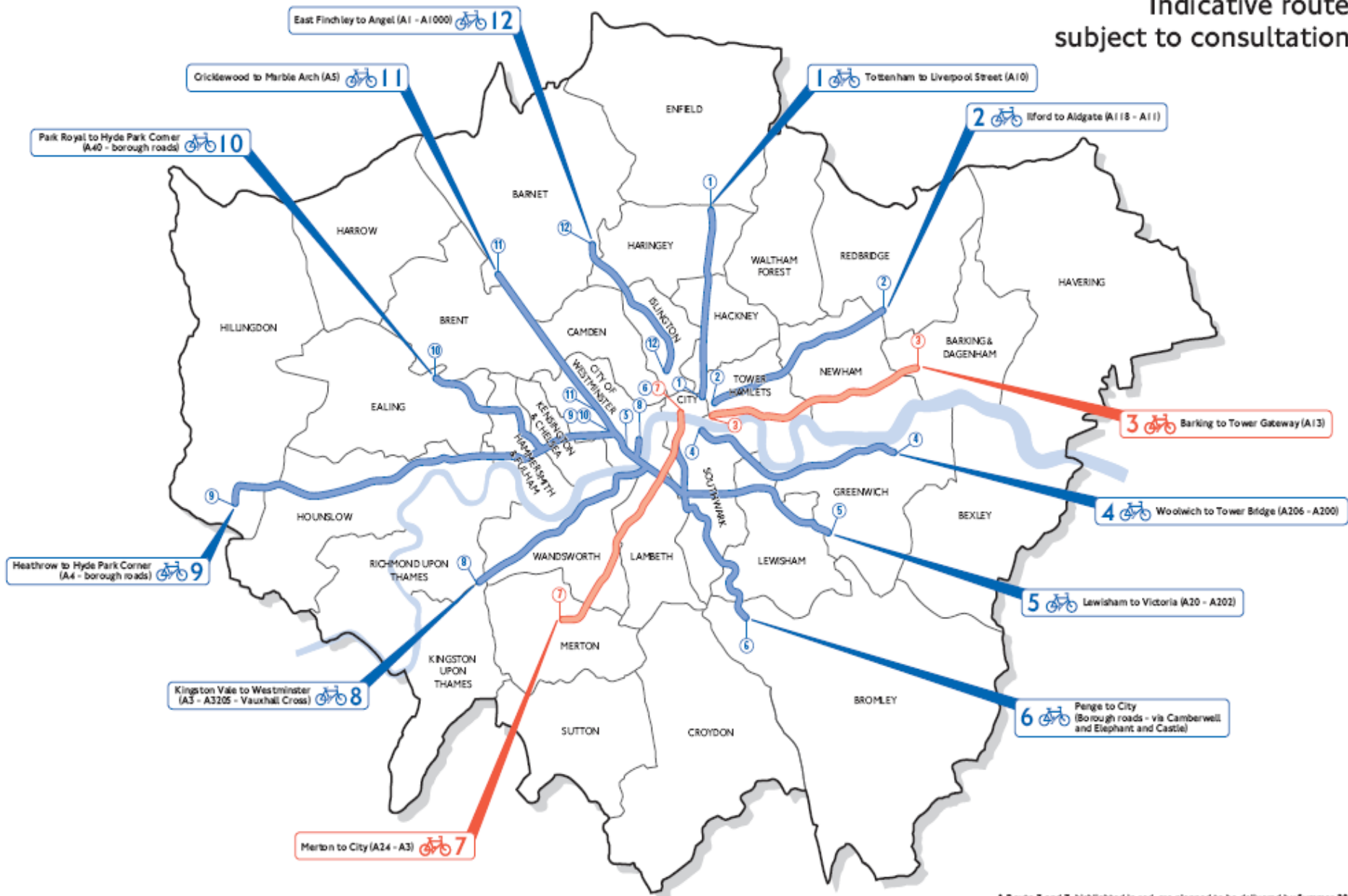
# London Schemes for 2010 & beyond – *Central London Cycle Hire*



Source: TfL  
(2009)

# Cycle Superhighways

Indicative routes  
subject to consultation\*



\* Route 3 and 7, highlighted in red, are planned to be delivered by Summer 2010.

# London Schemes for 2010 & beyond

- Olympics 2012
- London Underground upgrades
- Extension of the East London Line
- Local schemes:
  - Shared space
  - Accident reduction
  - Local mobility management

